

GREEN LAKESHORE RESTORATIONS AND STORMWATER TREATMENT

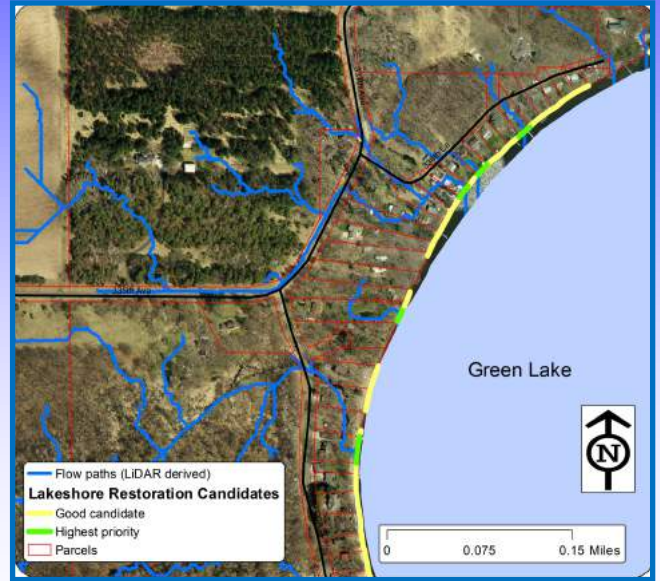


Project Summary Goals

In 2015 the SWCD, in partnership with the Green Lake Improvement District, applied for and received a Clean Water Fund grant to install Best Management Practices (BMPs) to help stabilize eroding shorelines and infiltrate phosphorus-rich rain runoff before entering Green Lake.

The projects completed with this grant were identified as priorities in a Stormwater Retrofit Assessment (SRA) covering the direct watershed to the lake. SRAs are done to identify locations for water quality improvement projects and prioritize them based on cost-effectiveness.

Green Lake was listed as a State impaired waterbody in 2013. A sustained effort will be required in order to improve the health of the lake. To that point, the SWCD will pursue additional sources of project funding and interested landowners in the future.



Pollution Reductions

Total Suspended Solids18,069.25 lbs/yr
 Total Phosphorus13.52 lbs/yr
 Total Shoreline Restoration....951 linear ft
 Rain Garden Size.....485 sq ft

Project Cost

Administration.....\$738.98
 Design/Installation Oversight...\$52,745.16
 Installation\$95,260.99
Total Project Cost.....\$148,745.13

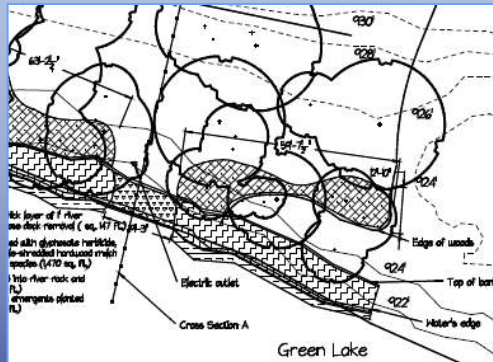
Project Funding

MN Clean Water Fund.....\$99,736.00
 Metro. Cons. Dist. CWF.....\$19,000.00
 Green Lake Imp. Dist.....\$14,893.00
 Landowner (cash & in-kind)....\$15,116.13
Total Project Cost.....\$148,745.13

The Process



Project Location Identification and Surveys



Designs: Completed by Anoka Conservation District



Construction & Installation

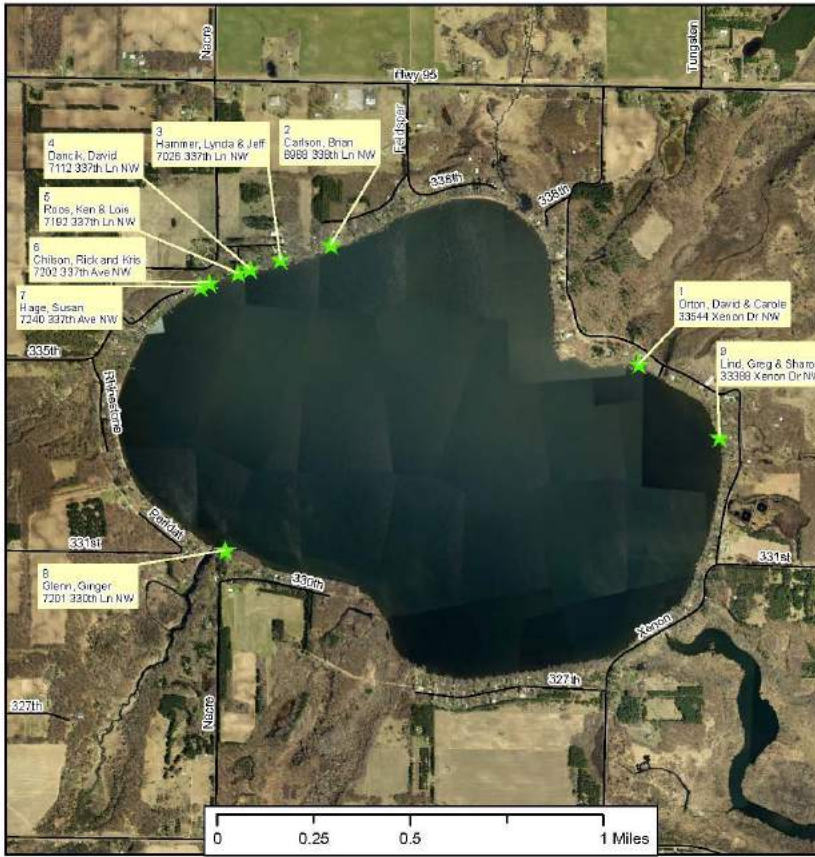
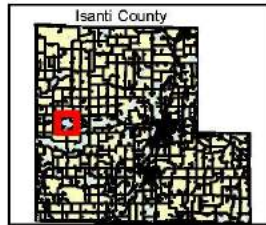
For More Information

Isanti Soil and Water Conservation District 763-689-3271 www.IsantiSWCD.org
 Todd Kulaf, Conservation Technician todd.kulaf@mn.nacdnet.net

Map Green Lakeshore Restorations

Legend

- ★ Project sites
- Roads



Dancik Rain Garden & Lakeshore Restoration



Carlson Lakeshore Restoration, Hill Stabilization



Hammer Lakeshore Restoration & Stormwater Diversion



Roos Lakeshore Restoration & Washout Repair



Chilson Lakeshore Restoration



Glenn Lakeshore Restoration



Hage Lakeshore Restoration & Washout Repair



Lind Lakeshore Restoration & Vegetated Swale



Orton Lakeshore Restoration