

Isanti County Aquatic Invasive Species Report

2023



Isanti County and Isanti Soil and Water Conservation District have worked in partnership to complete actions that will prevent and mitigate the spread of aquatic invasive species (AIS) and provide education and outreach to the public.



Every year the state of Minnesota provides counties with funding to prevent the spread of aquatic invasive species through Aquatic Invasive Species Prevention Aid. Isanti County Commissioners then approve an annual work plan and budget. In this report we will highlight the actions completed in 2023.

For questions contact:



Isanti County Zoning
763-689-5165
555 18th Avenue SW
Room Number 1101
Cambridge, MN 55008



Isanti Soil and Water
Conservation District
763-689-3271
110 Buchanan St N
Cambridge, MN 55008

Would you like to get involved in preventing the spread of AIS in Isanti County?
The Isanti SWCD is always looking for volunteers excited to learn about and advocate for AIS prevention. If you want to know ways you, or your group, can get involved please contact Lydia Godfrey with the Isanti SWCD at Lgodfrey@isantiswcd.org.





Image from MN DNR

Watercraft Inspections

Isanti County contracts with Water Guards to provide watercraft inspectors to public accesses during peak use. Watercraft inspectors prevent new AIS infestations by catching species attached to watercraft before they enter or leave a lake.

- 2153 total hours of watercraft inspections
- All Level 1 staff was provided training.



AIS Early Detection

If an AIS infestation does occur, early management can slow the spread and prevent further ecological damage. Therefore, every year we inspect public lakes for new invasive species. *If you believe you have found a new AIS please report it online to EDDMaps and contact Isanti County Zoning.*

- 12 public lakes monitored for AIS with no new infestations found.

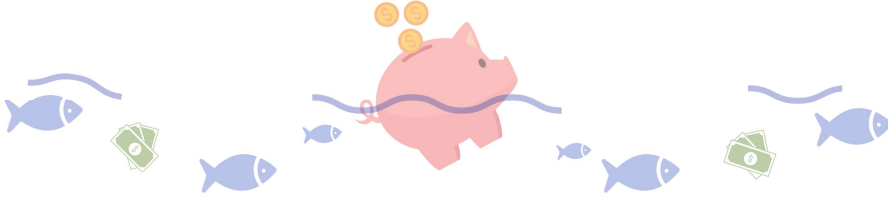


Status: No new AIS found in Isanti County



Contingency Fund Annual Contribution

Every year Isanti County allocates money towards an emergency contingency fund to assist lake groups reacting to a new AIS infestation. No contingency funds were used in 2023.



Mapping Services and Prevention Treatments

Cost-share is available for Lake Improvement Districts to do assessments, mapping, and treatments for AIS. A cost-share fund is being developed for other lakes which includes services such as early detection assessments, surveys for AIS through consultation, early detection treatments, and follow up assessments.

Spectacle Lake's CD3

A CD3 machine is installed at the Spectacle Lake Boat Access to help boaters effectively clean their watercraft. Due to the presence of zebra mussels in Spectacle Lake, it is important lake users thoroughly clean their boats after leaving the lake.

- The CD3's tools were used a total of 2,647 times in 2023. The use has doubled since last year!



Education and Outreach

Public AIS education is an effective tool for preventing the spread of invasive species. Therefore, AIS outreach is a key strategy in Isanti County's AIS work plan.

Climb Theatre

Climb Theatre was contracted to offer interactive educational performances about AIS aimed at children. This year, we had CLIMB Theatre do multiple mini-performances at community events. Pictured are performances at the Cambridge Library and last year's performance at the Princeton Lion's Ice Fishing Tournament.



- Three performances throughout Isanti County, including at the Cambridge East-Central Library, in Cambridge City Park, and during a Family Event in the Bluebird Amphitheater in Isanti
- A total of 87 people attended.



Outreach Targeted at Bait Distributors

Concentrating outreach to bait distributors allows us to reach those frequenting lakes. Furthermore, unused bait released into waterbodies introduces invasive species and damages our waterbodies.

- Branded bait bags available at local bait shops.
- "Clean, Drain, Dry" education posters provided for local bait shops and popular gas stations.



Starry Trek 2023 Results



187
volunteers

215
water bodies visited



258
public water accesses searched

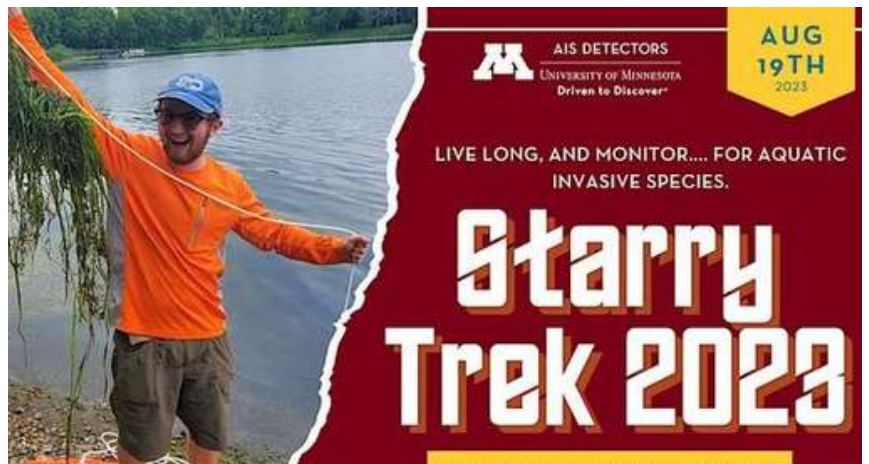
10 new invasive mystery snail reports

0 new starry stonewort reports



Starry Trek

Starry Trek is a statewide event organized by the U of M focused on searching for one of Minnesota's newest aquatic invasive species, starry stonewort, and other invaders. At the event, volunteers learn to identify and how to search for aquatic invasive species. This year we had two volunteers. No new infestations were found in the inspected lakes.



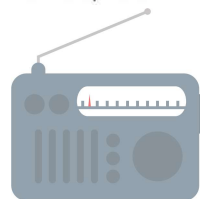
Social Media and Online Efforts

The internet provides a great tool to reach a wider audience than ever before. We utilized social media and online publications throughout the year to educate about AIS.

- 14 Social Media Posts.
- A New YouTube Video: [How to Identify Zebra Mussels](#)
- Three Stories in the Isanti SWCD's [Quarterly e-Newsletter](#).
- Advertised AIS events with KBEK radio station



How to Identify Zebra Mussels





5th Grade Conservation Day

On May 19th the Isanti SWCD hosted an AIS Prevention Station at the annual 5th Grade Conservation Day organized by Isanti County. Schools all across Isanti County participated. We were able to teach 145 5th Graders the steps they can take to prevent invasive species' spread and why it matters.

Printed Materials

Traditional materials were created to assist in education and reach a varied audience.

- Three newspaper articles published during anticipated times of heavy lake use.
- Isanti County specific flyers distributed to local lake groups and key stakeholders.
- This annual report to provide transparency to the public.

INVASIVE SPECIES WATCH



Review of Response Plan with ICCOLA

An emergent response plan with contingency funds exists to assist lake groups in reacting to a new AIS infestation. Each year, we provide a plan update to the Isanti County Coalition of Lake Associations (ICCOLA).

