

INVASIVE

Spiny waterflea

Bythotrephes longimanus

KEYS TO ID

- Range from $\frac{1}{4}$ to $\frac{5}{8}$ of an inch
- Have long, spiny tails with 1 – 4 pairs of barbs
- Have distinctive black eyespots
- Females may have bulbous brood chamber on back
- Most abundant during late summer and autumn

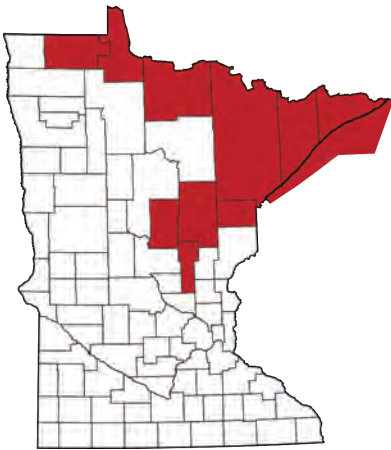
LOOKS SIMILAR TO

- Fishhook waterflea (invasive)
- *Leptodora* (native)
- *Chaoborus* (native)

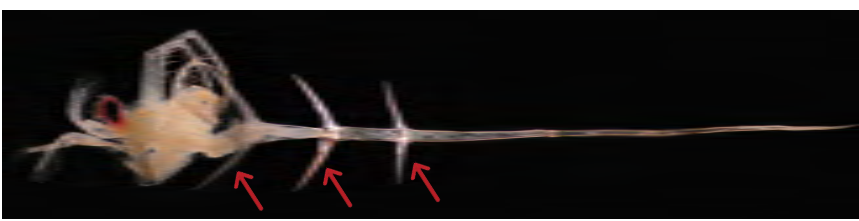
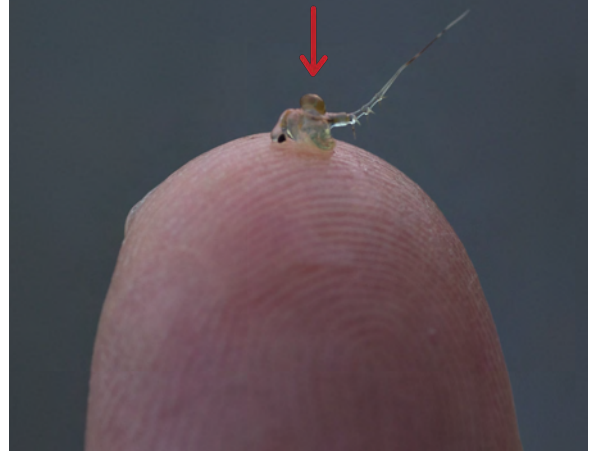
WHERE TO LOOK

- Most often found on fishing line or other equipment in clumps that resemble a gelatinous blob
- Usually found in deep lakes but can establish in shallow lakes and rivers
- Suspended in water column

CURRENTLY FOUND



Brood chamber holding early development eggs



Spiny waterflea with three pairs of barbs